

CAD-CUT® PREMIUM PLUS SUBLISTOP



POLYURETHANE FLEX MATERIAL WITH A SLIGHTLY ADHESIVE CARRIER.

This film provides a layer of Sublistop preventing any sublimation of the polyester color. The material is very easy to weed, and will be suitable for several print proofs.



AVAILABLE IN

50 cm x 25 m rolls

RECOMMENDED FABRICS

- 100% polyester
- 100% sublimated polyester
- Polyester-cotton blends
- Polyester caps
- Polyester mesh

CUTTING NOTES

You should always test cut prior to any production run. Remember cutter settings will need to be adjusted as the blade ages. For optimal cutting and weeding, maintain a line thickness of at least 2.5 mm for lettering and logos.

APPLICATION INSTRUCTIONS

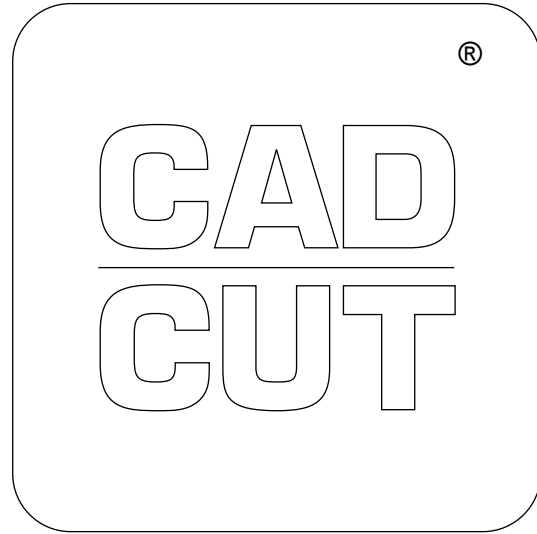
- Temperature: 130° C
- Time: 10 sec.
- Pressure: medium
- (#4-6 on Hotronix®)
- Peel: cold

MULTI-COLOR DESIGNS

Apply background for 3-5 seconds, peel carrier cold. Repeat for additional colors. Finish with final application of 18-20 seconds. Peel cold.

ACCESSORIES RECOMMENDED

- Grip Cover Sheet
- Cover Sheet - Non-Sticky
- EZ Weeder®, LED Weeder. LED Pin or Tweezers



CARE INSTRUCTIONS

Mashine wash up to 40° C using mild detergent. Do not use bleach. Do not dry clean. Can be directly ironed.

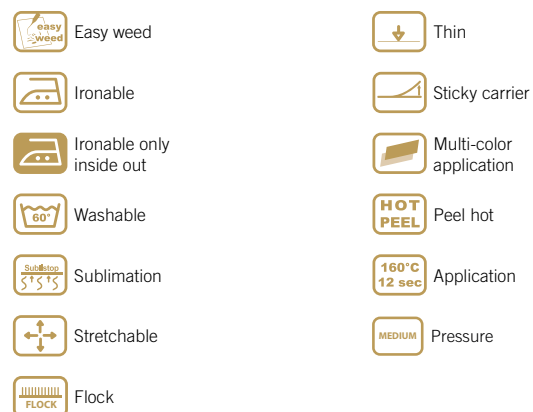
STORAGE

Store in cool, dry area. Avoid direct heat, sunlight and humidity.

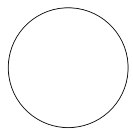
DETAILS



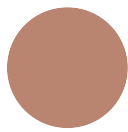
KEY



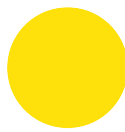
CAD-CUT® PREMIUM PLUS SUBLISTOP



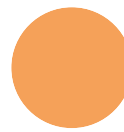
001
white



005
cream
ca. Pant. 479c



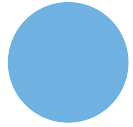
110
yellow
ca. Pant. 012c



185
light orange
ca. Pant. 1495c



200
red
ca. Pant. 186c



320
light blue
ca. Pant. 298c



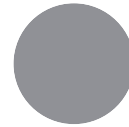
380
turquoise
ca. Pant. 7717c



422
light green
ca. Pant. 362c



730
grey
ca. 7543c



815
silver
ca. Pant. 877c



115
gold
ca. Pant. 871c