



## A CLASSIC AND DURABLE FILM, WITH A STICKY POLYESTER FILM CARRIER.

As there are so many colors available in the range, the material is perfect for multi-color designs. With a matte finish, and soft hand, and high opacity. Perfect for producing smaller designs. CAD-CUT® SportsFILM is a very lightweight polyurethane film available in a large range of colors enabling you to produce your own individual look. It is supplied on a self-adhesive polyester carrier, it gives excellent opacity and produces a matte finish. It is ideal for producing multi-color designs with intricate detail.



## AVAILABLE IN

50 cm x 25 m rolls

## RECOMMENDED FABRICS

- 100% cotton
- 100% polyester\*
- polyester-cotton blends

\*Test before application!

## CUTTING NOTES

You should always test cut prior to any production run. Remember cutter settings will need to be adjusted as the blade ages. For optimal cutting and weeding, maintain a line thickness of at least 1 mm for lettering and logos.

## APPLICATION INSTRUCTIONS

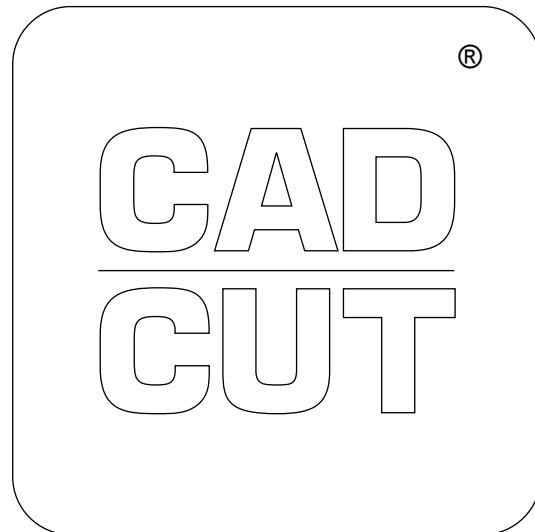
- Temperature: 130° C / 150° C
- Time: 10 sec. / 5 sec.
- Pressure: medium
- (#4-6 on Hotronix®)
- Peel: hot

## MULTI-COLOR DESIGNS

Apply background for 3-5 seconds, peel carrier cold. Repeat for additional colors. Finish with final application of 13-25 seconds. Peel cold.

## ACCESSORIES RECOMMENDED

- Grip Cover Sheet
- Cover Sheet - Non-Sticky
- EZ Weeder®



## CARE INSTRUCTIONS

Machine wash up to 60° C using mild detergent. Do not use bleach. Do not dry clean. Can be directly ironed.

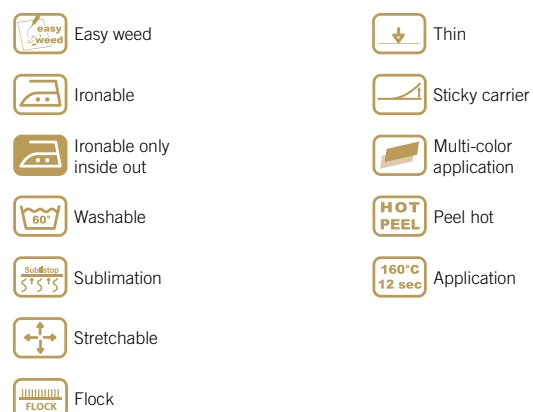
## STORAGE

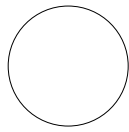
Store in cool, dry area. Avoid direct heat, sunlight and humidity.

## DETAILS

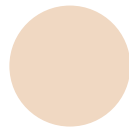


## KEY

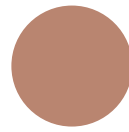




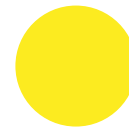
**001**  
white



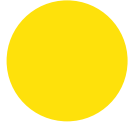
**004**  
beige  
ca. Pant. 4685c



**005**  
cream  
ca. Pant. 479c



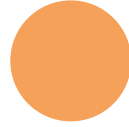
**100**  
lemon  
ca. Pant. 7405c



**110**  
yellow  
ca. Pant. 012c



**106**  
sunflower yellow  
ca. Pant. 137c



**185**  
light orange  
ca. Pant. 1495c



**180**  
orange  
ca. Pant. 021c



**210**  
signal red  
ca. Pant. 185c



**200**  
red  
ca. Pant. 186c



**270**  
burgundy  
ca. Pant. 188c



**255**  
pastel pink  
ca. Pant. 2036c



**252**  
pink  
ca. Pant. 507c



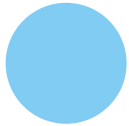
**250**  
fuchsia  
ca. Pant. 214c



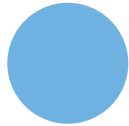
**285**  
pastel purple  
ca. Pant. 2071c



**280**  
purple  
ca. Pant. 2096c



**321**  
pastel blue  
ca. Pant. 538c



**320**  
light blue  
ca. Pant. 298c



**300**  
royal blue  
ca. Pant. 286c



**350**  
navy  
ca. Pant. 532c



**370**  
pastel mint  
ca. Pant. 317c



**380**  
turquoise  
ca. Pant. 7717c



**420**  
pastel green  
ca. Pant. 358c



**421**  
apple green  
ca. Pant. 368c



**422**  
light green  
ca. Pant. 362c



**400**  
green  
ca. Pant. 7727c



**410**  
dark green  
ca. Pant. 560c



**430**  
olive  
ca. Pant. 7763c



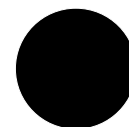
**550**  
brown  
ca. Pant. 7616c



**730**  
grey  
ca. Pant. 7543c



**780**  
dark grey  
ca. Pant. 419c



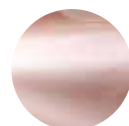
**700**  
black



**815**  
silver  
ca. Pant. 877c



**115**  
gold  
ca. Pant. 871c



**215**  
rose gold



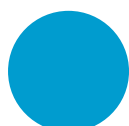
**101**  
neon yellow



**181**  
neon orange



**241**  
neon pink



**301**  
neon blue



**401**  
neon green